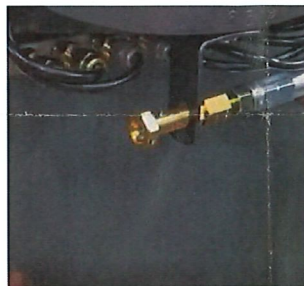


Installation of the Bijur Rubber Hose Assembly into a Bridgeport Series I Mill with a Bijur One-Shot Lube System



1. Using the 3/8" wrench remove the brass line from the 10 way junction block located on the bottom side of the saddle. This must be changed out because the new hose is metric and the original line was imperial.

2. Slide the compression nut and plastic ferrel onto the plastic line and insert the line into the 10 way junction block. using a 3/8" wrench tighten the compression nut into the 10 way junction block.



3. Remove the compression bushing and ferrel from the new rubber hose and set aside. Remove the nut from the fitting and install the rubber hose through the hole in the bracket and install and tighten the nut to the bracket using a crescent wrench.

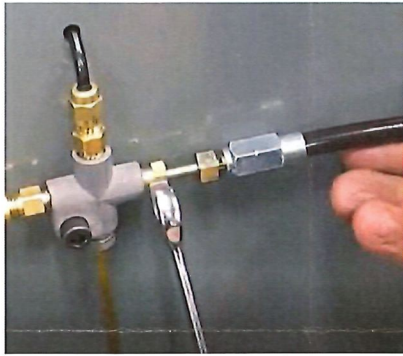
4. slide the compression bushing and ferrel onto the black plastic line and insert the line into the fitting on the plastic rubber hose affixed to the bracket.





5. Use a 10mm wrench to tighten the compressing bushing onto the rubber hose.

6. On the opposite side of the rubber hose install the compression nut and metal ferrule onto the metal post of the rubber hose.



7. Install the rubber hose into the 4-way junction block and use a 3/8" wrench to tighten into the junction block.

If you would like to watch our installation video please go to www.youtube.com/watch?v=PujY7Ji2XJo