

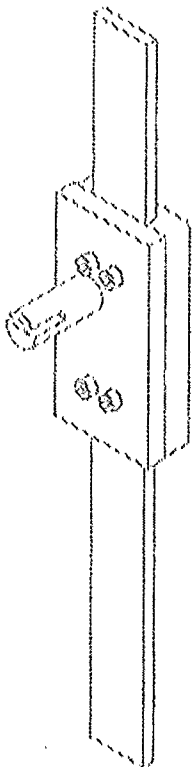
# DIGIMATIC QUILL KIT MANUAL

## INSTALLATION MANUAL

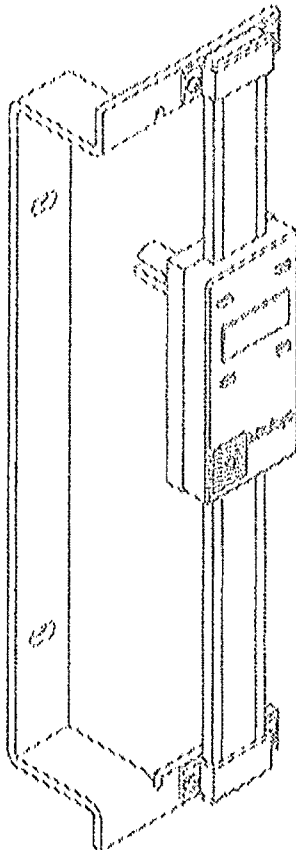
1. Install battery in back side of slider head. Check to see if power works.
2. Attach Rear Plate to Slider Head. Make sure the quill Stop Bar is located on upper right side of Slider Head (Fig. 1).
3. Attach Scale to Mounting Bracket (Fig. 2).
  - 3.1 Retract spindle all the way, then remove quill wheel.
  - 3.2 Remove vernier scale screws, but do not take off vernier scale.
  - 3.3 Place the Base over the vernier scale, then temporarily put in screws without tightening (Fig. 3).
4. Place Bracket Assembly on the Base for adjustment. First make sure screw holes on Base are aligned with screw holes on Mounting Bracket. Next check to see if Slider Head clears Mounting Bracket (Fig. 4). If correct, remove Bracket Assembly and tighten Base.
5. Attach Bracket Assembly to the base. Before tightening, make sure Bracket Assembly is parallel to the spindle.
6. Tighten screw on the back of Quill Stop Bar.
 

(Note: To adjust accuracy, push or pull Slider Head before tightening Quill Stop Bar screw).
7. The scale unit must be aligned parallel to the machine guide within .02mm (.0008") over its right/left mounting surfaces.

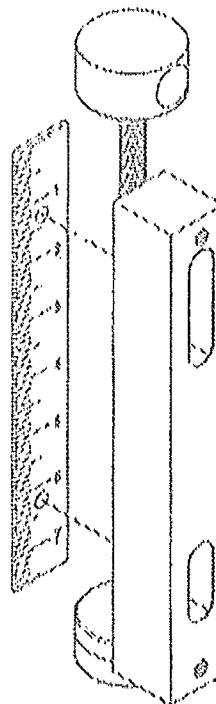
(Fig. 1)



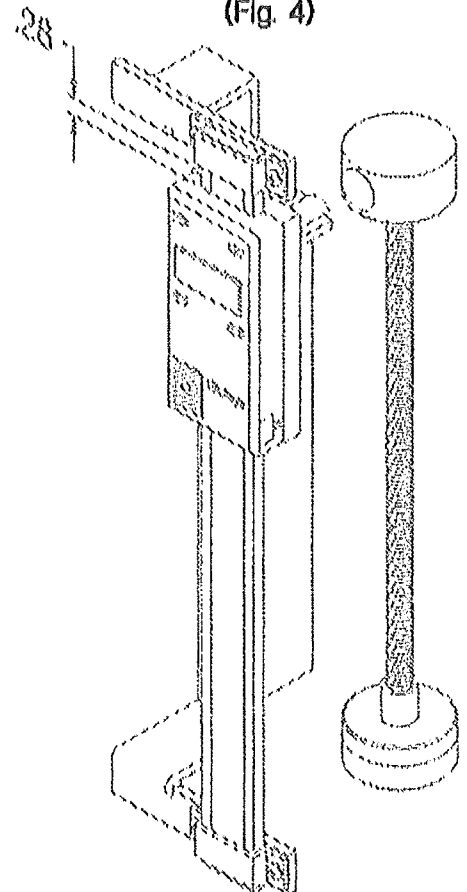
(Fig. 2)



(Fig. 3)

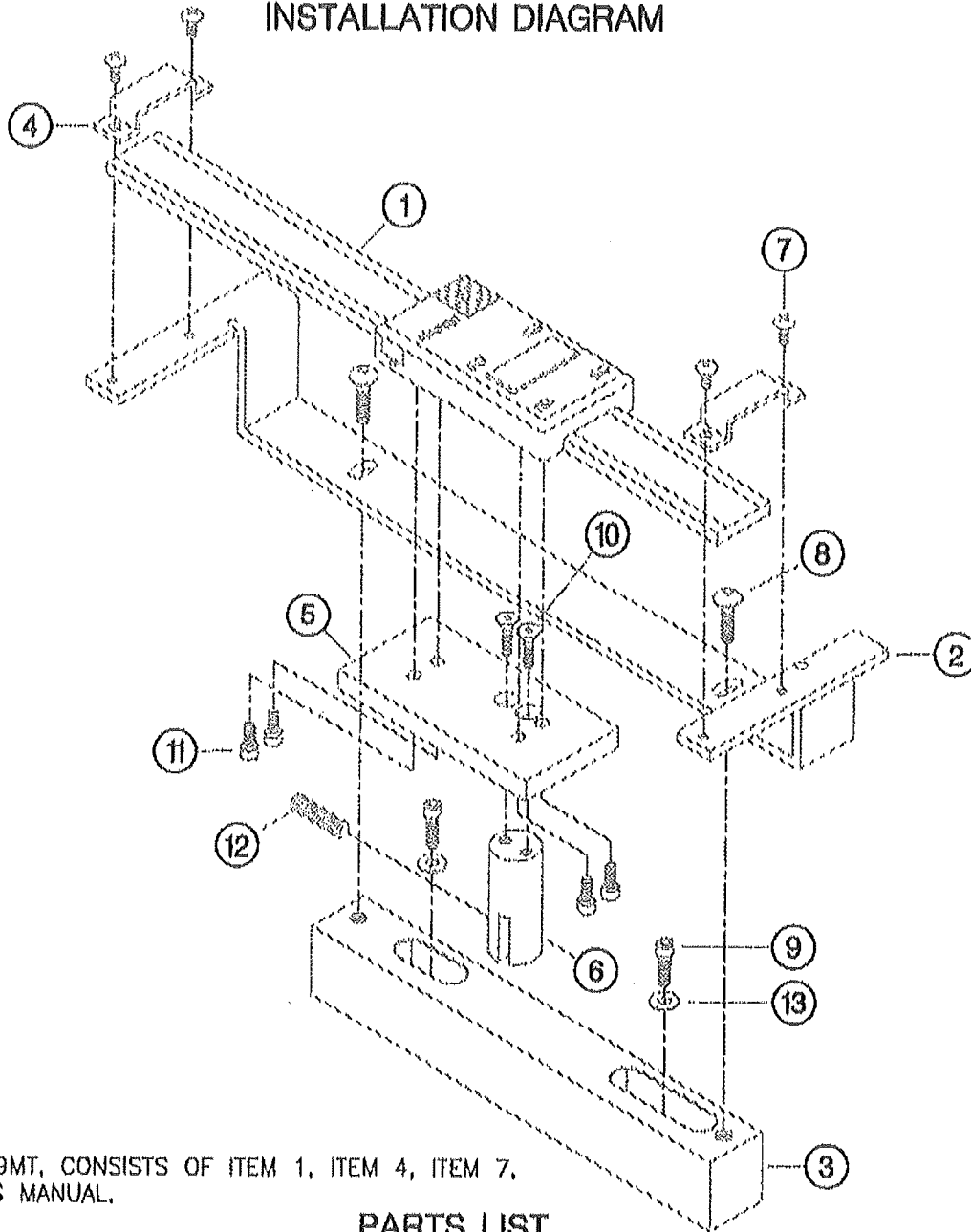


(Fig. 4)



## DIGIMATIC QUILL KIT MANUAL

## INSTALLATION DIAGRAM



NOTE:  
PART No. 572-319MT, CONSISTS OF ITEM 1, ITEM 4, ITEM 7,  
BATTERY & USER'S MANUAL.

## PARTS LIST

No.	DESCRIPTION	PART NUMBER	QTY	REMARKS
1	SDV 5" DIGIMATIC SCALE	572-319MT	1	SEE NOTE
2	MOUNTING BRACKET	053140	1	
3	BASE	053141	1	
4	PLATE HOLDER	145164	2	
5	REAR PLATE	053142	1	
6	QUILL STOP BAR	053143	1	
7	ROUND HEAD SCREW M3 X 6	013276	4	
8	BUTTON HEAD SCREW 8-32 X 1/2	53AAA230	2	
9	S.H.C. SCREW #6-32 X 3/8	53AAA415	2	
10	FLAT HEAD S.H.C. SCREW #5-40 X 1/2	53AAA342	2	
11	S.H.C. SCREW #5-40 X 5/16	53AAA397	4	
12	S.H. SET SCREW 10-24 X 3/4	53AAA254	1	
13	FLAT WASHER 4mm	195049K	2	